



Harkness Screens UK
 Tel +44 (0) 1438 725200
 Fax +44 (0) 1438 344400
 E-Mail sales@harkness-screens.com
 www.harkness-screens.com

Harkness Screens USA
 Tel +1 (540) 370 1590
 Fax +1 (540) 370 1592

**ELECTRIC ROLLER SCREEN
 HOME-VIEW
 PRODUCT DATA SHEET**

Document Ref DS-053 Issue 3 Oct 2007

The Home-View is an electrically operated roller screen, incorporating a specially designed motor for smooth, quiet operation.

Application

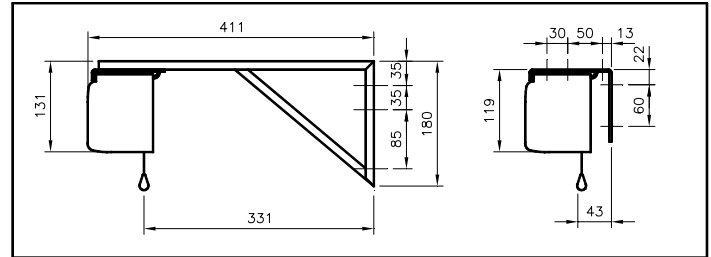
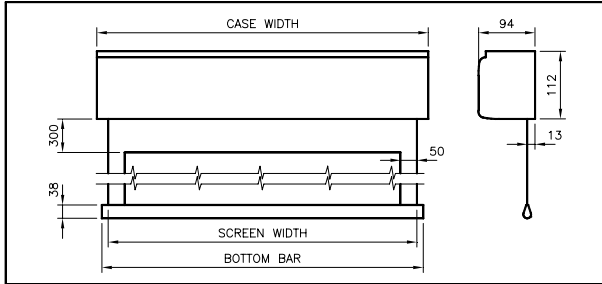
Typical applications include:

- Home cinema
- Conference centres
- Presentation suites
- Lecture theatres
- Educational establishments
- Boardrooms

GENERAL DIMENSIONS – NOT TO SCALE

All dimensions are in mm

Fixing Bracket Options



Stock Code	HVVF 160/120	HVVF 180/135	HVVF 200/150	HVVF 250/190	HVVF 300/225	HVHD 160/90	HVHD 180/101	HVHD 200/112	HVHD 250/140	HVHD 300/169
Format	4:3	4:3	4:3	4:3	4:3	16:9	16:9	16:9	16:9	16:9
Viewing area (w x h)	160x120cm	180x135cm	200x150cm	250x190cm	300x 225cm	160x90cm	180x101cm	200x112cm	250x140cm	300x169cm
Screen width*	170cm	190cm	210cm	260cm	310cm	170cm	190cm	210cm	260cm	310cm
Screen height	153.8cm	168.8cm	183.8cm	223.8cm	258.8cm	123.8cm	134.8cm	145.8cm	173.8cm	202.8cm
Case width	179cm	199cm	219cm	269cm	321cm	179cm	199cm	219cm	269cm	319cm
Bottom bar	173cm	193cm	213cm	263cm	313cm	173cm	193cm	213cm	263cm	313cm
Net Weight	15kg	16kg	17kg	18kg	21kg	15kg	16kg	17kg	18kg	19kg

*SCREEN WIDTH is PICTURE WIDTH plus black edge masking of 50mm (2") both sides. Horizontal seam required when screen height dimension exceeds 244cm (8ft)

General Details

Construction

Aluminium casing. Epoxy powder coated white (RAL 9010 – 75% gloss)
 Self-lubricating motor with thermal cutout, integral capacitor, gearbox and limit switches
 Ø70mm (2.75") aluminium tube screen roller mounted on two vibration and noise absorbing supports

Mounting

Adjustable mounting systems using extension brackets; designed for single use
 Ceiling – direct, bracket or suspended
 Wall - direct or bracket
 Pipe / fly bar supports

Screen Surface

Matt White – gain 1.0
 Flame retardant M1 7201-96
 30cm top and 5cm side; 3.8cm bottom black bar

Operating

Mains cable (right-hand side entry) when viewed from the front
 Power supply : 230V 50hZ
 Standard rating : 3 amps
 Consumption : 90W
 Speed : 17rpm – 135mm/5.3" per sec.
 Preset, adjustable upper and lower limit switches
 Control station : up/down, wall mounted

Special options

Integrated system control

Accessories

False ceiling mounting kit – consisting of 2 x screen case brackets and 4 x 1 metre suspension rods; trim kit up to 300 x 169cm.
 Black case up to 3m wide.
 Remote/radio control – stock code RRC (screen modifications required); low voltage interface 12v DC.

NOTE:

Comprehensive installation instructions accompany screen.
 Electrical connections should be completed by an appropriately qualified person.

In the interest of product enhancement, Harkness Screens reserves the right to introduce modifications or alterations without notice